

# Degree Apprenticeships



# What are Degree Apprenticeships?

Degree Apprenticeships offer a cost-effective way of obtaining a bachelor's or master's degree whilst gaining valuable work experience.

- Combine working with study at university.
- You gain a University of Exeter degree
- You are a full-time, salaried employee
- **No tuition fees!** You can enjoy a fully-funded university experience, at a Russell Group university.



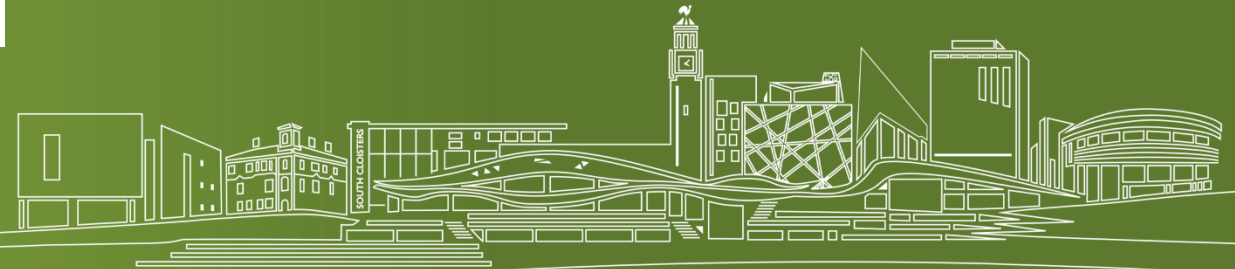
# What programmes are available?

## Digital and Technology Solutions (BSc):

- Partners include IBM, Renishaw, BT, Rolls Royce, the Met Office and more...
- Specialisms including Software Engineering, Cyber Security and Data Analysis
- Syllabus is accredited by [Tech Partnership Degrees](#)

## Civil Engineering (BEng):

- Two pathways: consultancy or contracting
- Developed in partnership with industry (Laing O'Rourke, EDF Energy)
- Working on major infrastructure projects such as Hinkley Point C



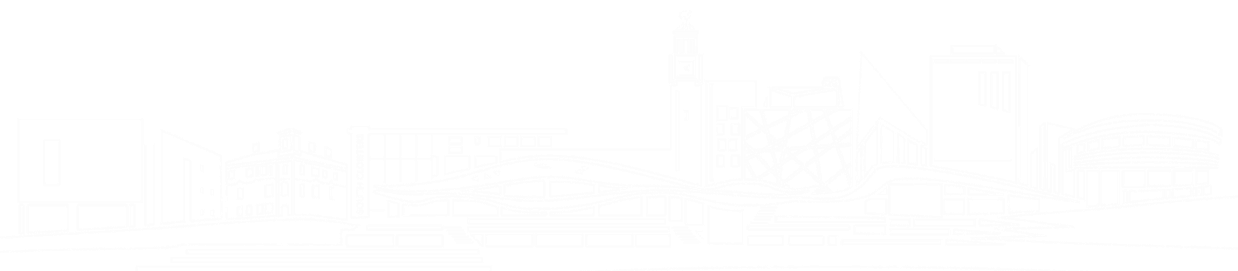


aspidistra  
SOFTWARE

 Met Office



RENISHAW  
apply innovation™



# How does it work?

You will be a full-time employee, studying towards a University of Exeter degree

- Apprentices on degree and masters level apprenticeships can earn up to £22,000 a year.
- Delivery models vary between programmes – blended learning, block release, online interaction
- Work done as part of your day-to-day role contributes to your degree. Apprentices are required to spend 20% of their total time on 'off-the-job training. How this is structured will depend on your programme.
- Mentors support you throughout the programme – University and employer mentors
- Access to the same support as any other University of Exeter student, including the Students' Guild, library, societies, facilities.



# Course Structure

## Residentials

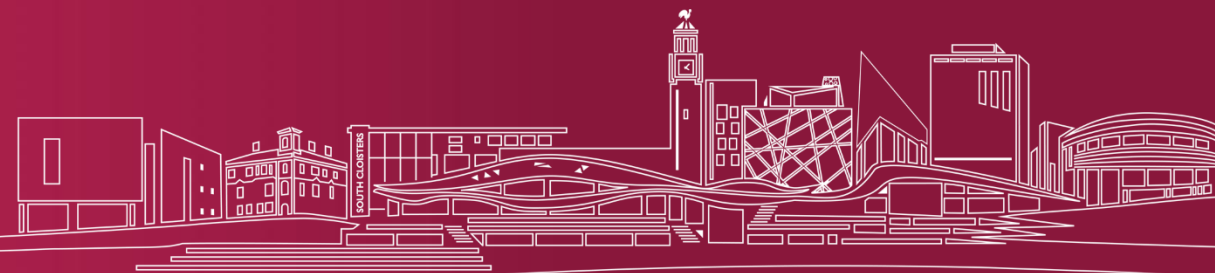
- Held at the University's Streatham Campus in Exeter
- Brings all apprentices together from across the country.
- Residential structure varies by programme:
  - Civil engineering: Two weeks block residentials four times a year
  - Digital and Technology Solutions: One week residential blocks three times a year, weekly online learning activities
  - Applied Finance: One day masterclasses once a month, weekly webinars and online learning activities
  - Diagnostic Radiographer: Three to five day block learning, three times per year

During residentials you will meet with fellow apprentices, and spend time with your academic mentor.

## E-learning

- Include lectures, seminars and online collaborative work
- Undertaken through the University's electronic learning environment.

E-learning supplements and furthers the learning begun during residential and provides academic support for ongoing projects in the workplace.



# What do Apprentices do?

- As an Apprentice you will undertake a wide variety of tasks.
- Some employers may rotate your role between departments.
- You'll be working as part of a team
- You will have real responsibility giving you hands-on, vocational training every day.
- At work you will be supported by your line manager and mentor.

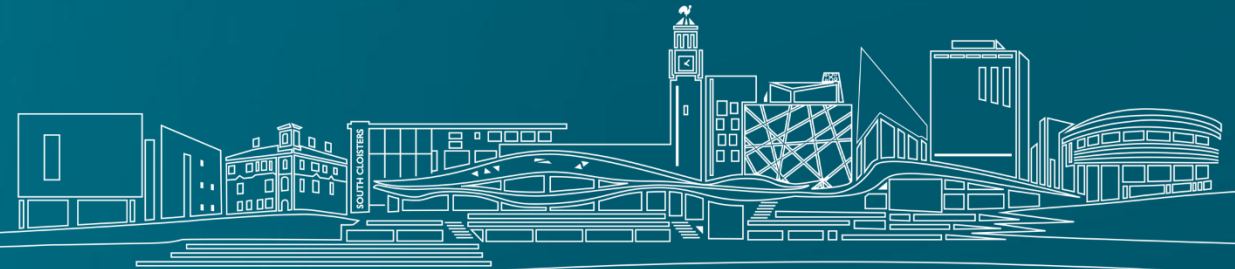
Current apprentices are working on exciting projects such as:

- Helping to build Hinkley Point Nuclear Power Station
- Supporting international investment portfolios at JPMorgan
- Supporting the UK's weather prediction systems at the Met Office

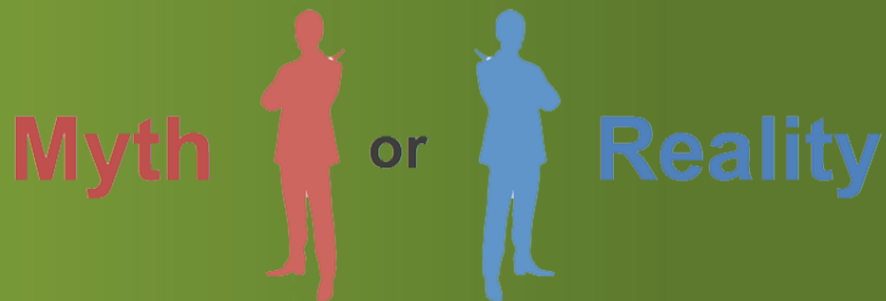


"I've always had a keen interest in technology but also business, and the programme allows me to develop my skills and learn more about how the two fields closely rely on each other. I'm confident that the range of topics covered in the teaching, as well as my placements at work, will set me up for a strong career."

Harley, Digital and Technology Solutions Degree Apprentice working at Rolls Royce

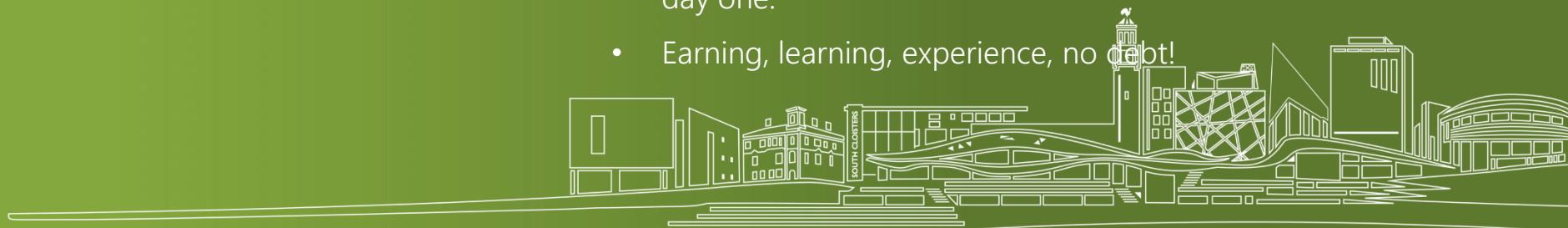


# Student Experience



- Degree Apprenticeships are easier programmes for people that cannot get through the 'usual' degree.
- Regular students get better support.
- Lack of a proper University student experience.
- You will not have academic mentor support as other students do.
- I am not going to learn enough.

- It is a tough program! You will have to develop time management skills very quickly. We look for the best students.
- Same support as a regular students.
- Residential periods on campus and access to the Students Guild.
- Academic and employer mentors follow each students from day one.
- Earning, learning, experience, no debt!





# Future prospects

- As an apprentice you are already a valued member of an organisation.
- Businesses invest in developing their apprentices and will likely want to keep their investment once their apprentices complete their studies.
- Four to five years of industry experience gained - which is extremely valuable for moving around the sector or developing your own company.



# How do I apply?

- NOT routed through UCAS – a sixth choice
- Applications are led by employers: We signpost to opportunities. Employers recruit at different times throughout the year.
- Entry requirements are equivalent to other Exeter programmes (AAA-ABB)
- See also:
  - Current University of Exeter Degree Apprenticeship vacancies: [exeter.ac.uk/degreeapprenticeships/vacancies/](https://exeter.ac.uk/degreeapprenticeships/vacancies/)
  - Find an Apprenticeship service: [gov.uk/apply-apprenticeship](https://gov.uk/apply-apprenticeship)
  - UCAS: [careerfinder.ucas.com/jobs/apprenticeship/](https://careerfinder.ucas.com/jobs/apprenticeship/)



# Any questions?

[exeter.ac.uk/degreeapprenticeships/apprentices/](https://exeter.ac.uk/degreeapprenticeships/apprentices/)





Queen Mary  
University of London



# Foundation Year Programmes

Poppy Hudghton

Student Recruitment and Widening Participation Manager

# Overview

- What are Foundation Year Programmes?
- What are the benefits?
- Who are they suitable for?
- Questions

# What are Foundation year Programmes?

**Gives access to  
degree course**

**Steppingstone into  
higher education**

**Variety of subjects  
available across the  
Russell Group**

# Biology

Entry Year: 2020

[Find out more](#)

[Apply now](#)

## 3 study options

### Biology

BSc (Hons)

Biological Sciences with Foundation

BSc (Hons)

Biology with Year Abroad

BSc (Hons)

### KEY INFORMATION

Degree	BSc (Hons)
Duration	3 years
Start	September 2020
UCAS code	C100
Institution code	Q50
Typical A-Level offer	Grades ABB at A-Level. This must include A-Level Biology. <a href="#">Full entry requirements</a>
UK/EU fees	£9,250
International fees	£23,500 <a href="#">Funding information</a>



# What are the benefits?

- They provide a springboard into degree level study
- Students are fully integrated into university life and community
- An extra year to build on skills, knowledge and experience
- Benefit from the same undergraduate student finance
- Time to adapt to different teaching and learning styles

# Case Study: Federico



*"Foundation year is a place that allows you to explore your options, understand what you want to do, where you want to go. In my case, having done poorly in my IB meant that I wouldn't have been able to attend a Russell Group University to study Engineering. Foundation gave me the means and opportunity to pursue my goals and my dreams."*

**Federico, Final Year Engineering**

# Who are they suitable for?

Students who don't quite have the right qualifications

Students who have been out of education for a number of years

Students who have missed out on grades for the degree course

International students with lower than required English Language

# Progression to degree courses

- Most Integrated Foundation Year Programmes provide direct progression to the full degree course
- Many universities will ask students to achieve a specific mark in Year 0 to progress, e.g. 50%
- Students will progress with amongst other foundation year students and students entering straight into Year 1
- Students will be familiar with the learning style and environment

# Summary

- Provide an alternative route through a degree
- Students studying in an integrated university environment
- Often removes the need for an additional Access course
- Students benefit from the same pastoral and learning support peers as their university peers



Queen Mary  
University of London

**Any questions?**