



Durham  
University

# Pre-entry Access Programmes

Supported Progression  
Sutton Trust  
STEP

Jordan Donohue  
Wednesday 12 May 2021

# SP, ST & STEP - Key benefits

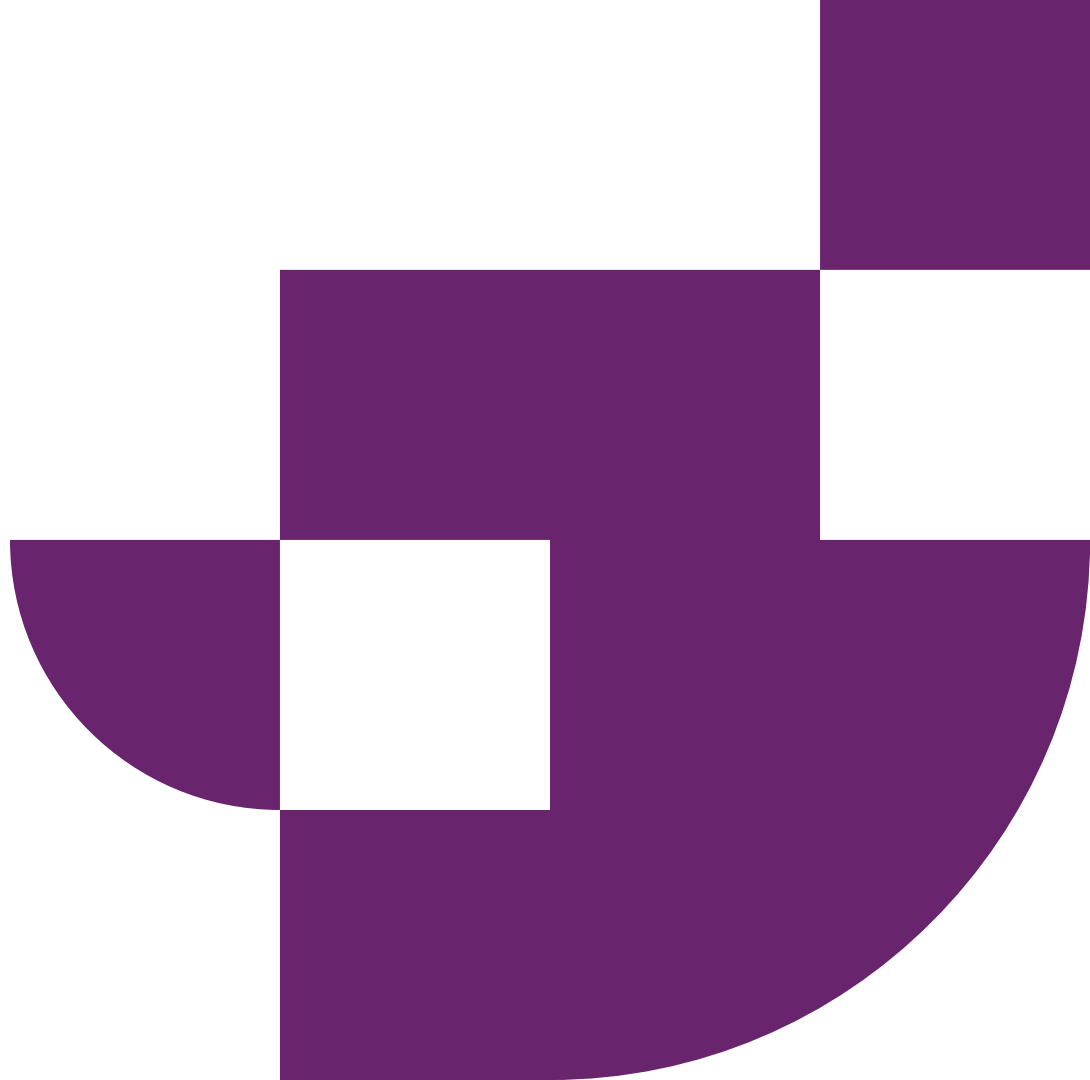
- Guaranteed offer
- Academic taster sessions
- Academic project (SP & ST)
- Speak to current students
- Meet like-minded people
- Receive key admissions information
- Residential experience
- Free to attend





Durham  
University

# Supported Progression



# What is Supported Progression?

A **Year 12** (or equivalent) programme that offers a range of support and opportunities for students to find out more about the University, to help them apply to Durham and to sample academic sessions.

Applications are open to students all across the UK studying at a state school.

## 11 Years

Over 2000 students attended

Over 600 enrolled

Over 300 graduated

# SP Timeline

## SP Timeline 2022 – subject to change

<b>Autumn Term</b>	Online applications open
<b>January</b>	Applications close
<b>February</b>	Students sent outcome of application
<b>March*</b>	Induction Event
<b>April</b>	Spring Event (two day)
<b>July* (2 weeks before summer school)</b>	Academic prep work sent to students
<b>July/August</b>	Summer School
<b>August (1 week after summer school)</b>	Hand in academic project
<b>September</b>	Project feedback communicated to students
<b>September</b>	Next Steps

# Who can apply?

## Essential Criteria:

- Must currently be in Year 12 or equivalent, at a state school in the UK
- Normally have UK nationality or settled status
- Taking qualifications in relation to the subject stream applied for
- Achieved 8 GCSEs, or equivalent, at Grade 6 or above, including 3 at Grade 7 or above
- Come from neighbourhoods with low overall progression rates to HE or high levels of socio-economic deprivation

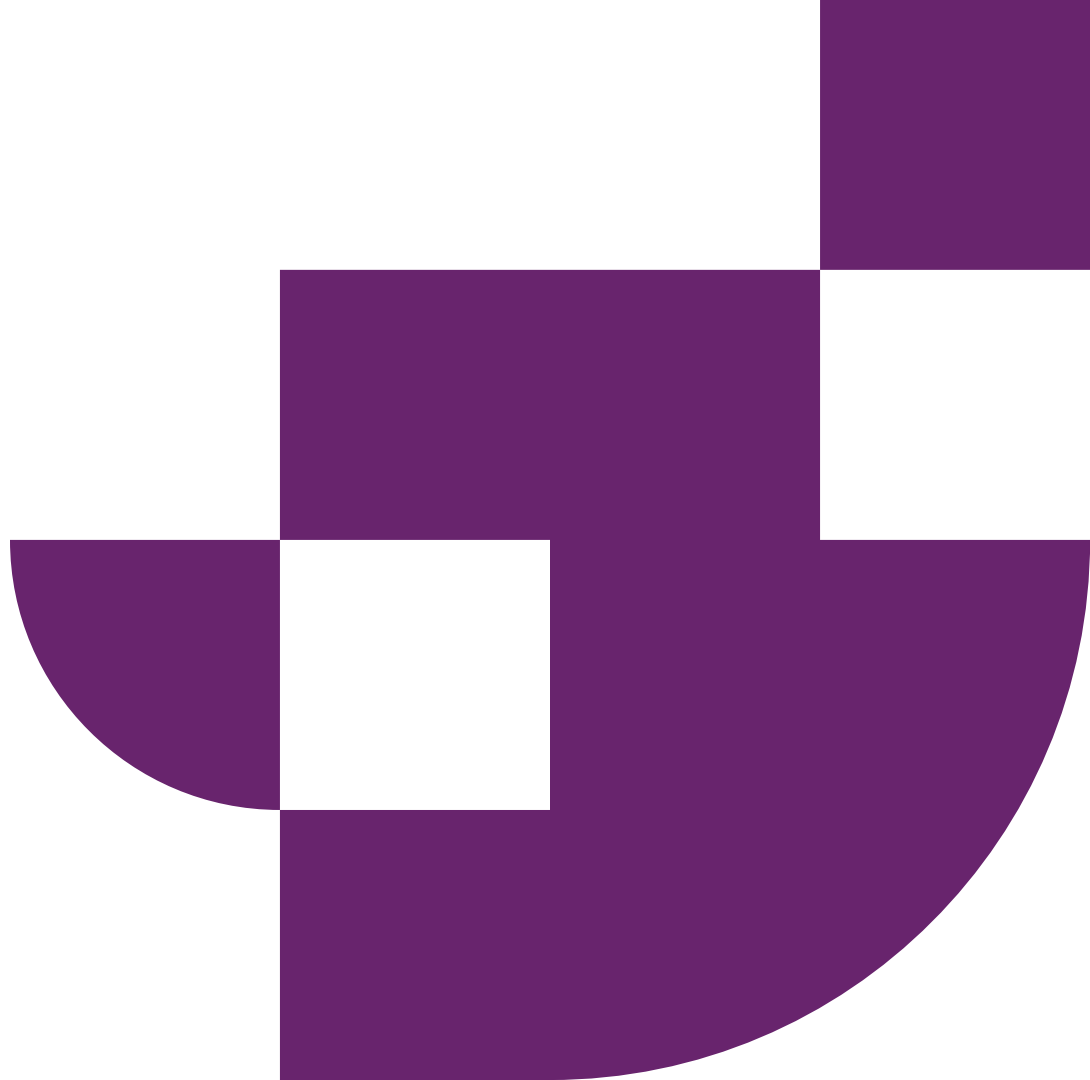
## Priority may be given to those who:

- Attend schools or colleges with a low overall GCSE and/or A-Level (or equivalent) point score and/or with low progression rates to higher education
- Will be within the first generation in their family to go to university
- Are (or have been) looked after, accommodated or in care or are estranged from their family
- Are entitled to Free School Meals, Pupil Premium funding and/or discretionary school/college payments



Durham  
University

# Sutton Trust Summer School



# Sutton Trust Summer School

- Year 12
- UK wide
- Targeting similar criteria to SP, but broader ‘social mobility’ aims
- Summer School in August
- Sutton Trust Online





# ST Timeline

## ST Timeline 2022 – subject to change

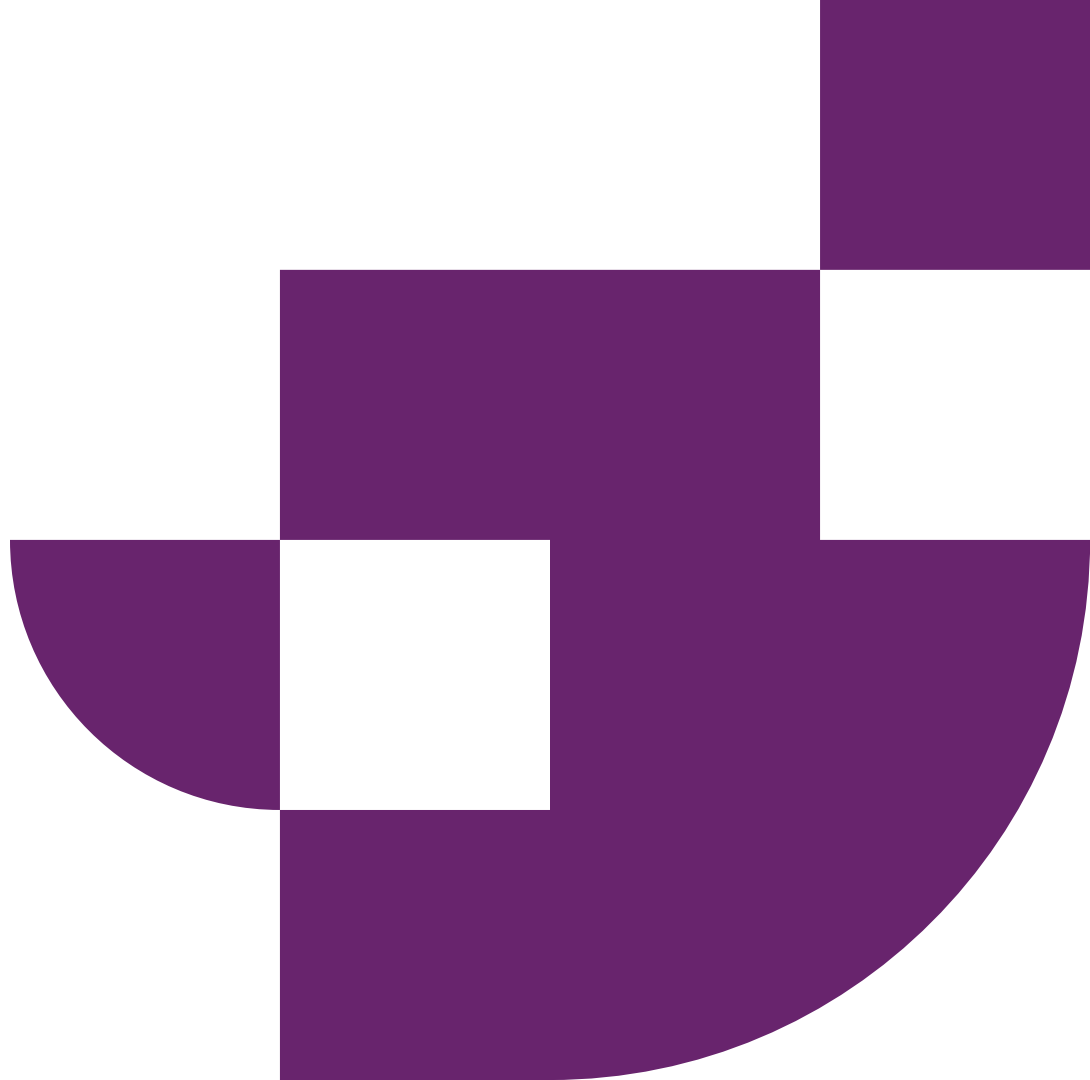
<b>January</b>	Online applications open
<b>March</b>	Applications close
<b>April</b>	Students sent outcome of application
<b>July (2 weeks before summer school)</b>	Academic prep work sent to students
<b>August</b>	Summer School
<b>August (1 week after summer school)</b>	Hand in academic project
<b>September</b>	Project feedback communicated to students
<b>September</b>	Next Steps




Durham  
University


# Durham University STEP

Space to Explore Potential





STEP offers a dedicated **space** for young black students, who are typically underrepresented at Durham University, **to explore** not only their own potential, but all that Durham has to offer as a **potential** university destination.



# STEP - Space to Explore Potential

- Working with Reach Society
- Targeting UK Year 12 Black Students – intersection with other underrepresented groups
- 3 night summer school in July
- 8 subjects available
- 2020 highlights:
  - Application support
  - Academic subject
  - Mentor time
  - Keynote speech from Dr Jason Arday
  - Presentation from Durham African Caribbean Society
- Continued support through MS Teams and email



# Academic strands:

**Accounting**

Biosciences

Economics & Finance

Geography

Law

Mathematics

**Psychology**

**Sociology &**

**Criminology**



# STEP Timeline

## STEP Timeline 2022 – subject to change

<b>January/February</b>	Applications open
<b>April</b>	Applications close
<b>April/May</b>	Students sent outcome of application
<b>June</b>	Welcome Event
<b>July</b>	3 day summer school
<b>September</b>	Next Steps

# Who is STEP for?


## Essential criteria:

- Year 12 Black students
  - Black or Black British – African;
  - Black or Black British – Caribbean;
  - Black or Black British - Mixed;
  - or Black or Black British - Other.
- UK State School
- Normally have UK nationality or settled status


## Additional criteria:

- LPN1/2 and Acorn 4/5
- Free school meals
- Care experienced
- Estranged students
- 16-18 Bursary
- First Generation





Taking part in this programme was an incredible experience! Before attending this programme I was very much unsure about a future at Durham or even pursuing further education here. However, from attending sessions and speaking with my mentor, I now feel more confident in engaging with others but also more comfortable knowing that there are societies and people to ease my journey when going to university or anywhere in life especially for those of the BAME community.



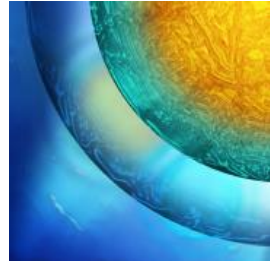


# Access Programmes – Similarities and Differences

Access Team Programmes 2022			
	STEP	Supported Progression	Sutton Trust
Target Group	UK Black Students – intersection with other underrepresented groups	North East – LPN, ACORN, FSM etc.	UK Wide – Similar criteria but broader ‘social mobility’ aims
Age Group	Year 12	Year 12	Year 12
Cohort Size	70-100	150-200	200-300
Number of Events	3	4	2
Residential Events	1 x 3 day/2 night	Summer School & accommodation for Spring Event if outside NE	Summer School

# How competitive are the programmes?

2021 Applications			
	STEP	Supported Progression	Sutton Trust
Applications	140	539	1003
Places offered	123	213	306
Applicants per place	1.2	2.5	3.3



# How can I support my students?

- Promote the programmes
- Target eligible students
- Complete teacher verifications
- Manage student expectations



# Thank you

Any questions?

[supported.progression@durham.ac.uk](mailto:supported.progression@durham.ac.uk)

[sutton.trust@durham.ac.uk](mailto:sutton.trust@durham.ac.uk)

[step@durham.ac.uk](mailto:step@durham.ac.uk)