

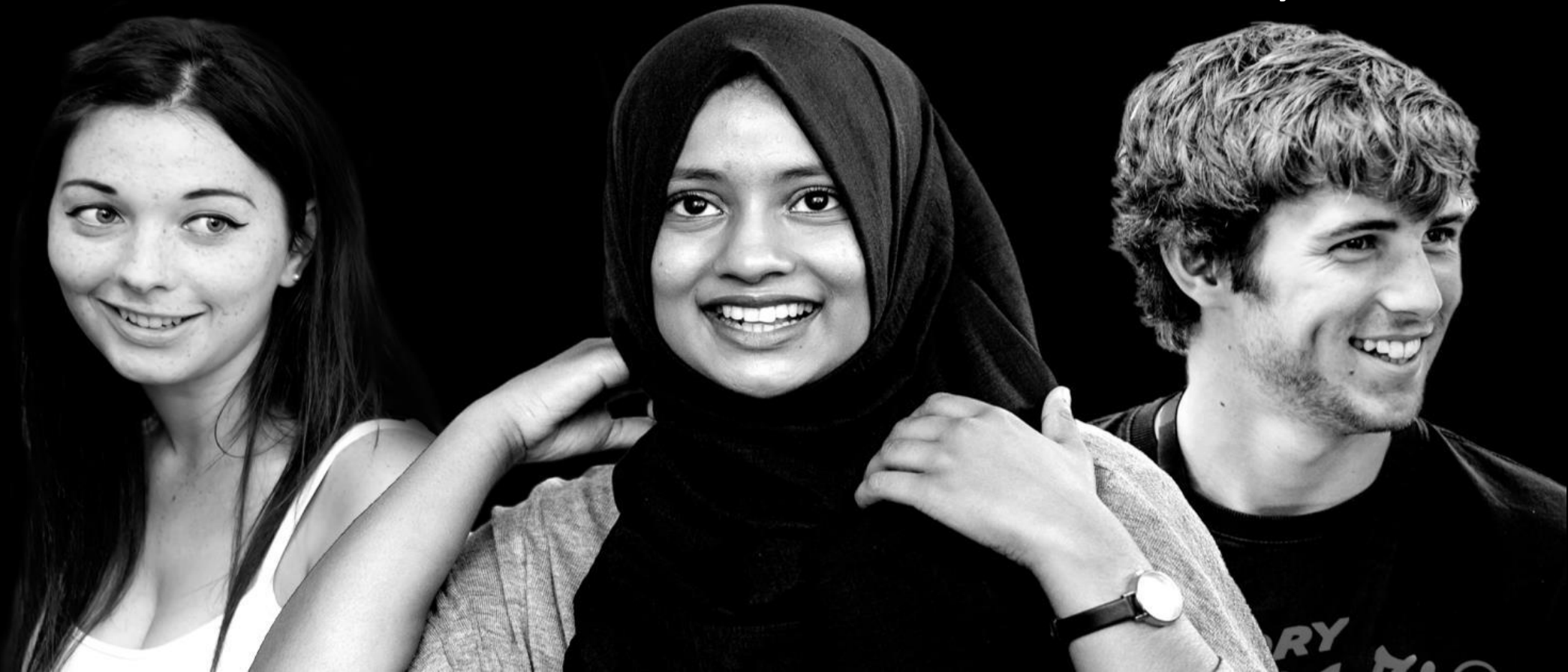
ADVANCING
ACCESS

24 leading universities
working together with
schools and colleges

Preparing students for university with outreach programmes

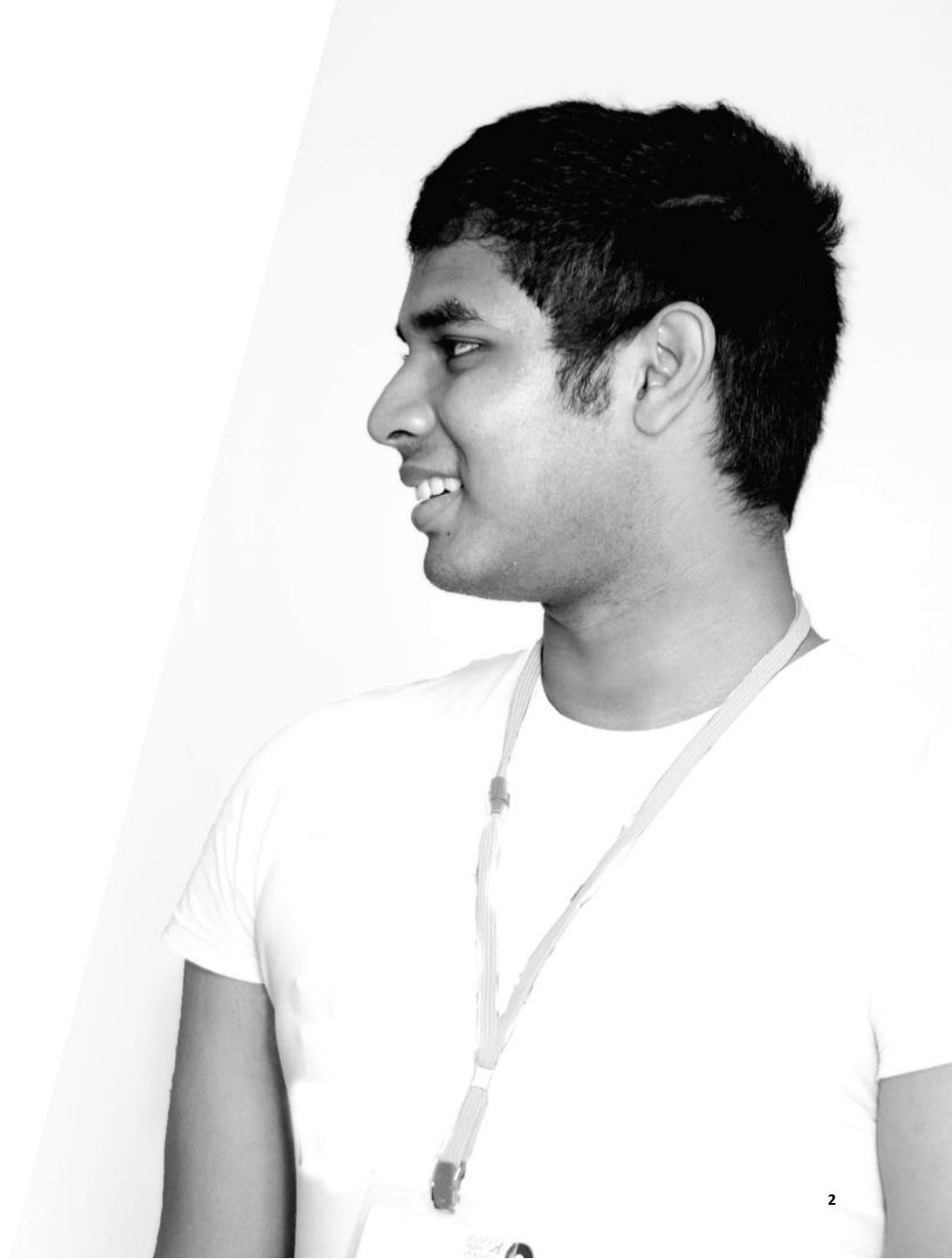
Paul Martin, Denise Brooks,
Sarah Patterson and Abby Harrison

Wednesday 1st March 2023



Coming up...

- Some general principles of outreach programmes
- Case studies from Sheffield, Newcastle and York
- Any questions?



University outreach

University outreach work takes many forms:

- The target audience can range from primary school pupils to mature learners, as well as teachers and careers advisers
- Outreach work is most commonly delivered by:
 - > Universities themselves
 - > Uni Connect
 - > Other third sector providers (e.g. Sutton Trust, **Into**University or The Brilliant Club)
- Some outreach has a general focus, whereas widening participation (WP) outreach specifically targets disadvantaged or underrepresented groups



Examples of outreach work (not exhaustive!)

- Campus visits
- Summer schools
- Mentoring/e-mentoring
- In school visits and assemblies
- Webinars
- Academic taster sessions
- Workshops on UCAS or student finance
- Attainment raising activities
- Support for interviews and additional tests
- Support accessing particular careers
- Programmes offering a package of support



Why should students take part in outreach activities?

- Students will have a better idea of whether higher education is the right choice for them
- Some outreach activities may support with raising attainment
- Increased confidence and better engagement with school work
- Outreach can support with setting future career goals
- Maximises chances of success in the admissions process
- Students may be flagged in contextual admissions processes as a result of their participation



Pre 16 vs Post 16 outreach

Pre 16

- At this stage, you're most likely to be engaging with universities in your local area
- You are likely to have to take the lead in arranging activities
- Expect to see universities delivering more pre-16 attainment raising work over the next 5 years

Post 16

- At this stage, there are some things you can arrange yourself, but other things where individual students will have to use their own initiative
- You can encourage students to apply to take part in certain opportunities – they will need to think ahead to meet application deadlines



WP supported entry programmes for 16-18 year olds

Access to Birmingham (A2B)

Access to Bristol

HE+ (Cambridge)

Step Up Programme (Cardiff)

Supported Progression (Durham)

Exeter Scholars

Top-Up Programme (Glasgow)

STEM Potential (Imperial College London)

K+ (King's College London)

Access to Leeds

Liverpool Scholars

Springboard (London School of Economics)

Manchester Access Programme

PARTNERS (Newcastle)

Ambition Nottingham

Opportunity Oxford (offer holders only)

Access to Queen Mary

Pathway Opportunity (Queen's Belfast)

Discover Sheffield

Ignite your Journey (Southampton)

Warwick Scholars

Next Step York

WP supported entry programmes for 16-18 year olds

- These programmes typically run through Year 12, and often into the start of Year 13 too
- Students need to act early, typically applying in the first half of Year 12
- Students receive a package of support whilst on the programme
- Those who complete the programme successfully are sometimes then made offers with lower than usual entry requirements
- For some programmes students must live within a certain distance of the university, others are open to all students nationally

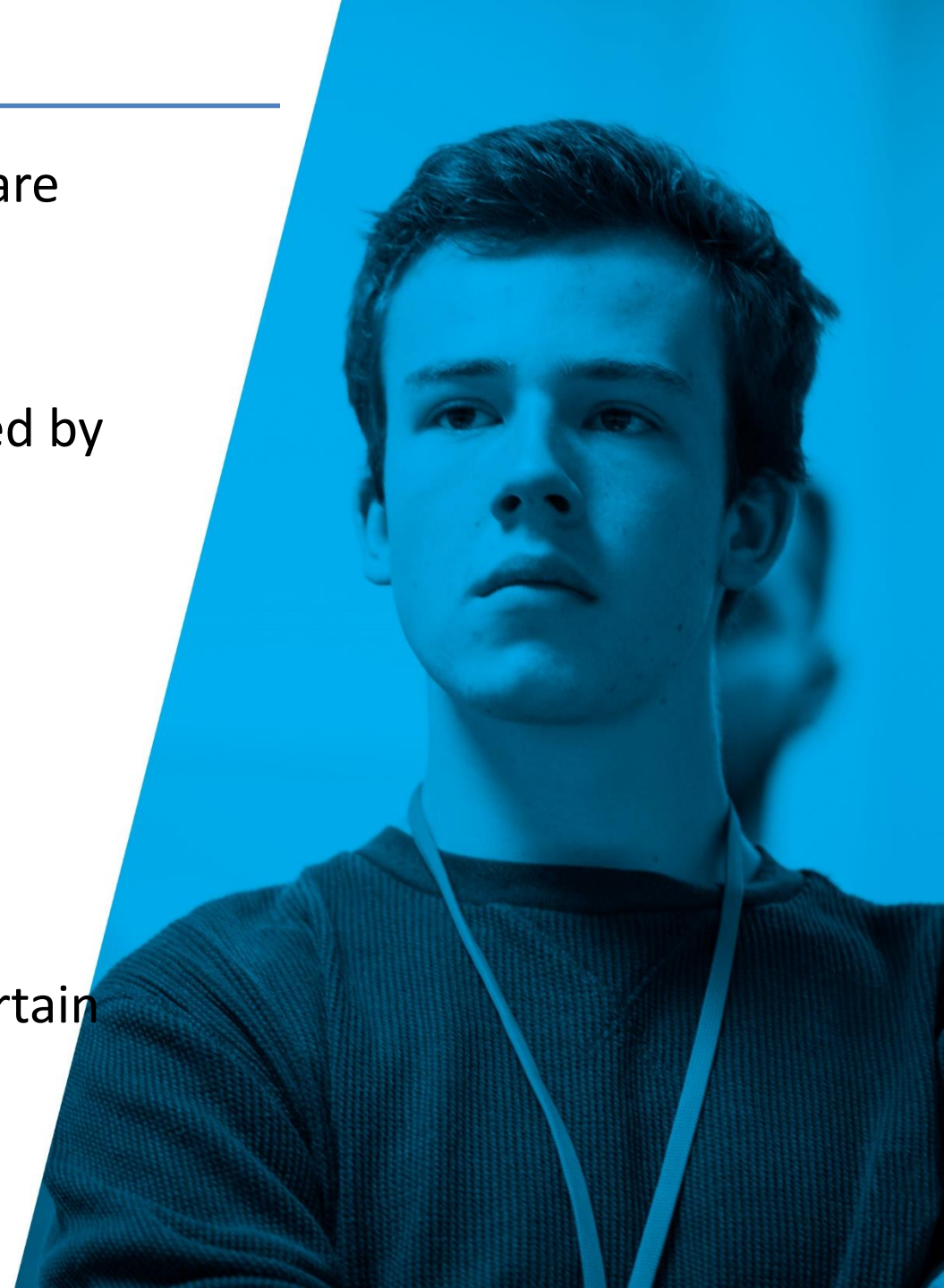


Typical eligibility criteria

Different programmes have different criteria, but these are all possibilities:

- Have been in receipt of free school meals
- Live in an area of low HE participation (often measured by POLAR)
- Currently/have been looked after in care
- Attend a qualifying school
- 'First in the family' to attend university
- Are a refugee or asylum seeker

Some programmes are also only open to members of certain underrepresented ethnic minority groups



Contextual admissions

- Participants on particular programmes may then be flagged as contextual applicants but **typically only at the same university where they took part in the programme**
- A typical grade reduction is 2 grades lower but sometimes up to 4 grades lower in the most generous cases
- Students should ensure that they use the 'Extra activities' section on the UCAS application to log outreach activities they have taken part in. They can also mention outreach activities in their personal statement



Realising Opportunities programme



Realising Opportunities programme

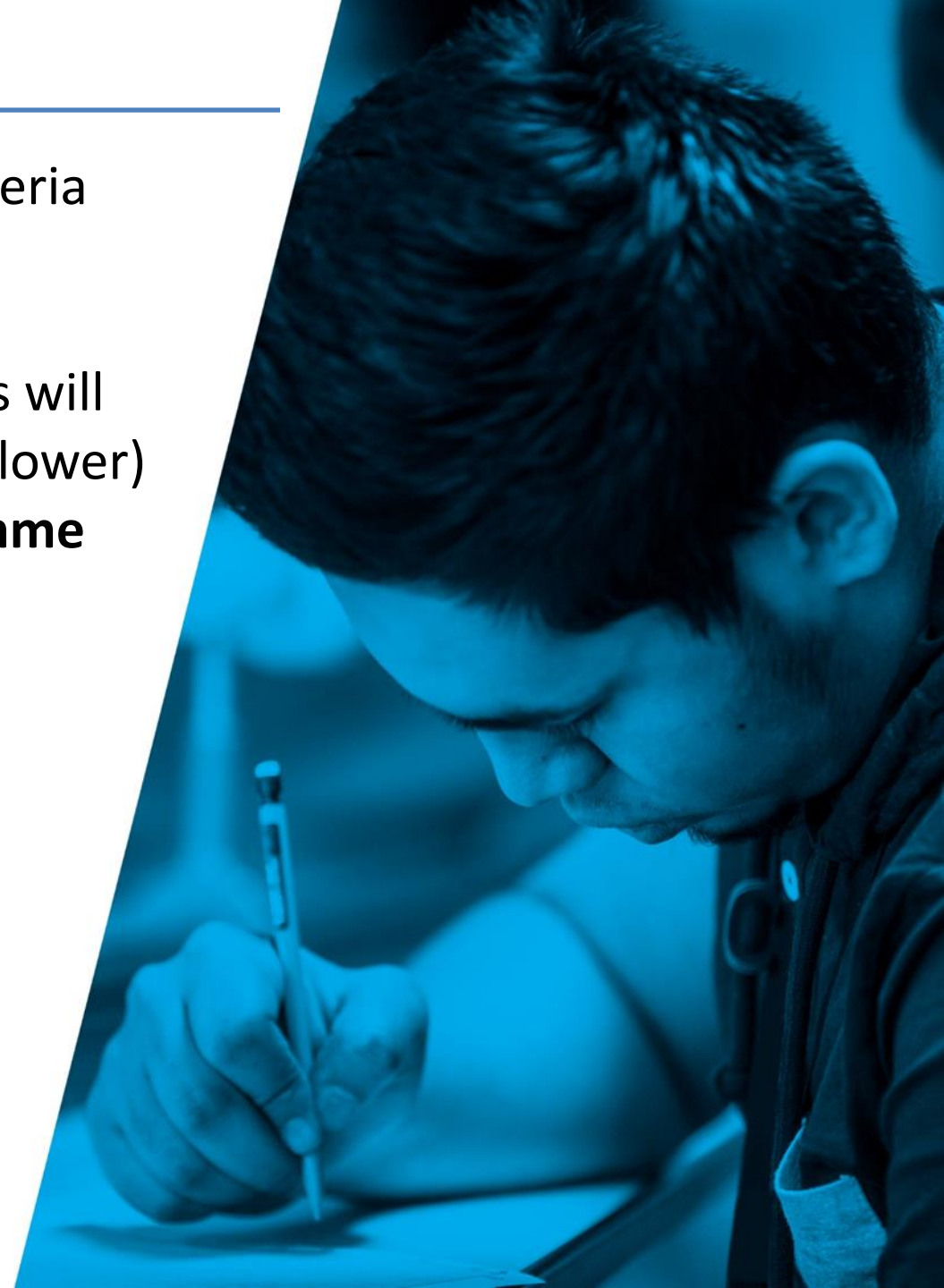
Participants:

- Take part in a launch event at their host university
- Receive support in making a choice about HE
- Develop research and critical thinking skills through an academic skills module
- Can get their questions answered by current university students and staff
- Complete an online study skills module
- Take part in a National Student Conference



Realising Opportunities programme

- To take place students must meet certain eligibility criteria and also attend a participating school
- After completing the programme successfully, students will be entitled to a lower offer (typically two A level grades lower) **at all of the 14 universities participating in the programme**



Outreach programme 2022-3



From Newcastle. For the world.

What we offer

Outreach programme

We provide a University-wide progressive programme of outreach to students and staff in **schools and colleges nationally**.

Working in partnership with teachers, current students and our graduates, our range of activities and workshops is **tailored to the needs of schools and colleges**, including a focus on helping to **raise pupil attainment and raising aspirations**. We travel year round and can offer one-off sessions or a continuous programme of activities depending on your requirements.

Our keys aims are to:

1. **Inform** young people of the **benefits of studying** at higher education
2. **Support pupil attainment**
3. **Increase progression** to university from **under-represented groups**

Our Outreach Team comprises of four managers, three coordinators and eight recent Newcastle University graduates from different courses across our three faculties:

- Faculty of Medical Sciences
- Science, Agriculture and Engineering
- Humanities and Social Sciences

All activities meet **Gatsby Benchmarks, Careers Development Framework and National Curriculum** and implement the **NERUPI evaluation framework** to continuously improve.

Outreach programme

Post-16 offering

In-schools/colleges available year round, in line with the academic timetable. Ad-hoc sessions also available. We can tailor presentation content depending on your requirements.

Subject-specific workshops - across three faculties, some bookable at certain times of the year only (Medicine and Dentistry) - workshop-focused and interactive.

- Humanities and Social Sciences
- Faculty of Medical Sciences
- Science, Agriculture and Engineering

On-campus visit days – bring your sixth formers onto our Newcastle city centre campus for the day. We offer a **Visit Bursary to reimburse travel** costs (state schools only).

Higher Education specific presentations

- Future Options
- University Mythbuster
- Choosing the Right Course and University
- Student Life
- Study Skills
- Writing your Personal Statement
- PARTNERS: Our Supported Entry Route
- Why Newcastle
- Applying to Uni: The UCAS process
- Student Finance + Budgeting Bonanza
- Accommodation – Where to Stay?
- Transition to Uni
- What Happens Next?
- Careers after university

Learning outcomes

Outreach programme

Learning outcomes – in-school visits

1. **Research and identify options** regarding higher education and justify their reasoning.
2. **Understand how to assess the most appropriate route**, course and institution to suit their personal preference.
3. **Identify and articulate** the appropriate **transferable skills** (academic and practical) required for their university application.
4. Be able to **identify personal preferences** regarding study styles and use this in their progression planning (goal setting).
5. **Plan and identify personal strategies to maximise success** in upcoming assessments

Outreach programme

Learning outcomes – on-campus events

1. **Introduce students to university** life and the range of subjects available to study
2. Allow students to **explore different subjects in detail** working with current students and leading academics and researchers
3. Provide relevant **information at key decision-making times** to ensure students can make an **informed decision** about their **futures**
4. Inform students of the kinds of **skills they will need to be successful** at university
5. **Improve students' motivation** to work harder to reach their educational goals
6. **Increase students' confidence** in their **ability to apply to university**

Outreach programme

Visit Bursary

This fund is available for teachers, to support with the costs of bringing students to campus.

How much can I claim?

School/college staff are able to claim up to £350 for the cost of state school/college group travel. Where possible, we don't want the cost of travel to be a limiting factor in attending our on-campus events. If you're concerned that the £350 limit will prevent your school group from accessing campus, please let us know to discuss further.

What can the Visit Bursary be used for?

The Visit Bursary can be used to support travel costs relating to on-campus outreach events which are booked by teachers/advisors for their school groups. Eligible events may include:

- University Open Days
- On-campus outreach days (for example, one-day events booked via our outreach team, library services or STEM outreach team)

Application is online [via a simple form](#).

Supported entry routes and widening access

Outreach programme

Supported entry routes

- **Pathways to Law** and **Pathways to Medicine** with the **Sutton Trust** – typically **2 grades lower** for Law and **3 grades lower** for Medicine
- **High Performance Athletes** – typically up to **2 grades lower**
- **PARTNERS** and (**Bitesize Uni**) Summer Schools – PARTNERS up to **3 grades lower**. PARTNERS applications close **26 February** and BSU applications close **12 March**.
- **Personal circumstances** - e.g. eligibility for free school meals, care experienced students, home postcode – **up to 2 grades lower**

Outreach programme

How to get in touch

1. Email your contact directly (sarah.patterson2@ncl.ac.uk)
2. Complete our [online booking form](#) for any type of event
3. Call us on: 0191 208 6094 Monday – Friday
4. Email our general inbox at outreach@ncl.ac.uk

Keep up to date

Teacher mailing list - receive monthly event updates, tips, helpful eBooks, and a whole host of insider information to help you support your students.

STEM mailing list - receive STEM Outreach opportunities straight to your inbox - suitable for teachers and prospective students.

Student mailing list - receive monthly event invites, support with your university application and other key updates from the University.



UNIVERSITY
of York



Preparing students for university with outreach programmes

Abby Harrison
Access and Outreach Manager

Next Step York



- Next Step York is a personalised two year programme, starting in Year 12 for students in the north of England, providing an opportunity to explore university options and receive specialist support with their current studies.
- It is aimed at pupils who have the potential to progress to university but have experienced barriers that may prevent them from accessing higher education.

Applications open October for Year 12.
[Next Step York - Schools and colleges, University of York](#)



YorWay to York

- A programme aimed at students living in the Midlands and South of England (roughly 100 miles or more from York).
- The programme will help introduce to them to York and consider the possibility of moving away from home for university and whether this is an option for them.

Applications open October for Year 12.
[YorWay to York - Schools and colleges,](#)
[University of York](#)



YorJourney

Students choose from a range of activities across four modules, each supported by current University of York students:

- **YorStudy:** Discover your perfect course through immersive sessions and taster days. You'll also take part in academic projects, and meet staff and students from our departments.
- **YorSkills:** Get support with your studies and exams, and grow your personal skills through wellbeing workshops. You'll also learn how to prepare for, and make the most of, uni life.
- **YorUni:** Try out a student society, explore campus and the city, and hear from our students about life at York. You'll also be guided through your UCAS application and personal statement.
- **YorFuture:** Plan for an exciting future, discovering career paths with insight days and graduate mentoring. You'll also be invited to apply for Campus Conference and a Summer Residential.



Black Access

- A unique three year programme run by Black students at York for students of a Black background.
- Students will explore a variety of areas from study skills and mental health whilst also creating a community of Black students in York.
- Students who complete and pass the programme and apply to the University of York might be eligible for an alternative offer of up to three grades below the standard offer, subject to meeting minimum conditions

[Black Access - Schools and colleges, University of York](#)



Shine

Shine supports pupils from schools across Yorkshire, the Humber and North East to reach their full potential.



- Shine is a sustained programme of support provided to pupils throughout Year 7 to Year 11, delivered in partnership with partner schools across the region.
- Our partner schools are located in targeted geographical areas and meet a range of socio-economic factors. Shine participants are high-achieving students from backgrounds that are underrepresented in higher education.
- Shine aims to raise awareness and knowledge of higher education, while also inspiring, motivating and encouraging participants to realise their aspirations and achieve academic success.

Realising Opportunities

- Realising Opportunities is a collaboration of research-intensive universities including York. We're working together to promote fair access and social mobility for students from under-represented groups.
- The project supports selected students, in their post-16 studies with skills development and guidance. The programme begins in Year 12 and offers many opportunities to experience university first-hand, as well as allowing students to realise their potential to study at a research intensive university.
- Activities include on-campus masterclasses, study skills, academic activity days and residentials.

Realising Opportunities - Schools and colleges, University of York



UNIVERSITY
of York



YESS

York Experience Summer School

- Our immersive summer school gives Year 12 / Level 3 Year 1 students the opportunity to experience the academic and social side of university life.
- Students will stay for four days and three nights on campus, learning what to expect from uni life, with evening activities, support at York sessions and more. They'll meet current students who can answer any burning questions about studying at York. And afterwards, we'll support them through Year 13 / Level 3 Year 2.
- YESS is completely free. We cover transport, food and materials.
- Application close in April

[York Experience Summer School - Schools and colleges,
University of York](#)



Pathways to Medicine

- Pathways to Medicine is a widening participation programme run in conjunction with the **Sutton Trust** at Hull York Medical School. The programme supports talented sixth form/college students who wish to pursue a career in medicine.
- The Pathways to Medicine programme offers students a range of opportunities to give them an insight into the medical profession, support them through the application and selection process for medical school and prepare them for attending university.
- Students for Pathways to Medicine are recruited in year 12 from schools and colleges across the Hull York Medical School region.



[Pathways to Medicine | Hull York Medical School \(hyms.ac.uk\)](https://hyms.ac.uk)

York visits you

- ★ We offer a number of informative and inspirational talks in schools and colleges about York, as well as impartial advice about higher education. Sessions are delivered by staff and in some cases by York students or recent graduates.
- ★ Our talks can be delivered as classroom talks, or at your careers or parents' evenings. If you have a specific topic in mind, let us know - our talks can be tailored to the needs of you and your pupils. We are also able to deliver talks virtually.
- ★ We offer both pre-16 and post-16 talks.



MOOCs - Massive Open Online Courses



Designed by York academics, our massive open online courses (MOOCs) are free and open to everyone.

Engage with university-level study, explore a new subject area or to prepare for higher education more generally.

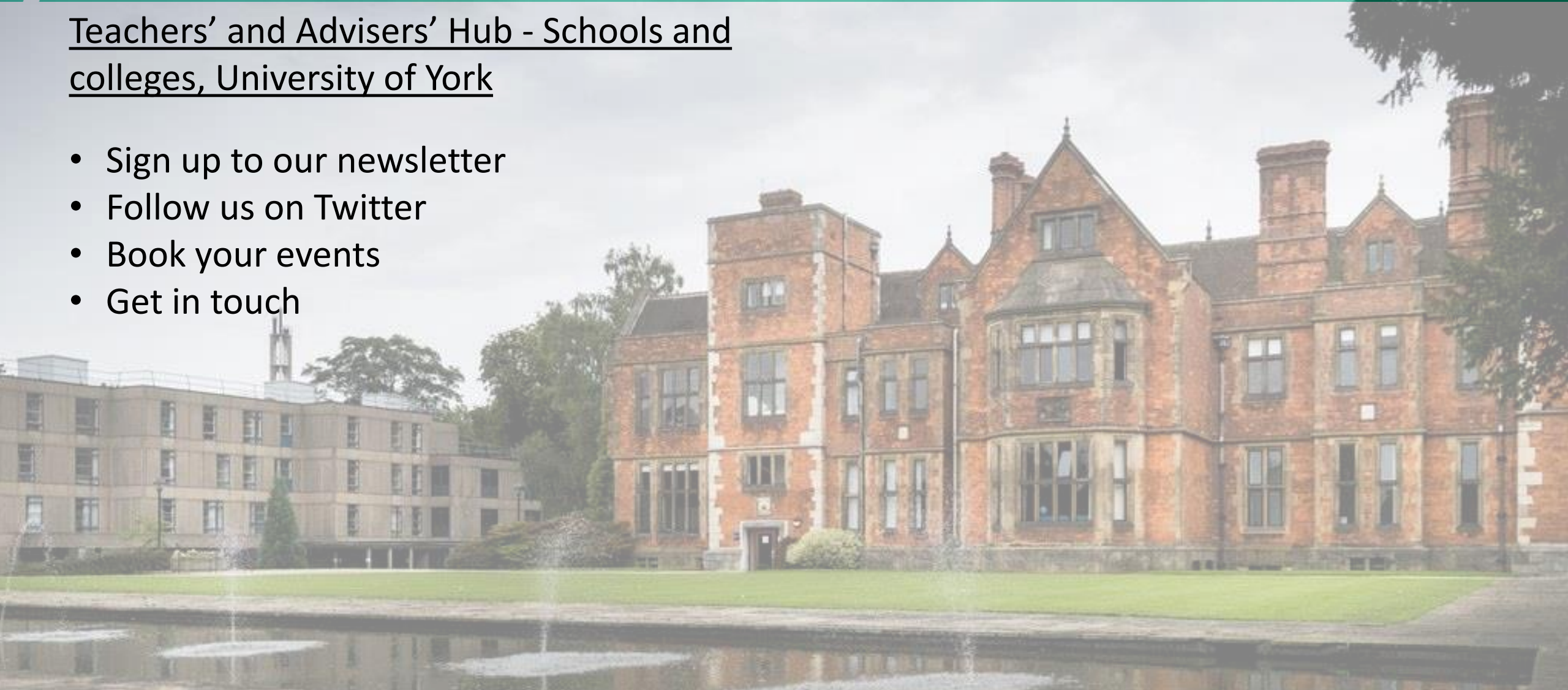


[Free online courses - Study at York, University of York](#)

University of York Teachers' and Advisers' Hub

Teachers' and Advisers' Hub - Schools and colleges, University of York

- Sign up to our newsletter
- Follow us on Twitter
- Book your events
- Get in touch





University of
Sheffield

School & College

Activities

2023-24

**RUSSELL
GROUP**

**A WORLD
TOP 100
UNIVERSITY**



Overview

1. What we offer
2. Eligibility requirements
3. Get involved
4. Connect with us



University of
Sheffield

What we

offer.





University of
Sheffield

Activities & events.



Open days and other visits →



School presentations and workshops →



For teachers and advisers →



Study skill activities →



Taster sessions →



Sir Harry Kroto Resources →



Science talks and activities →



Primary School activities (5-11) →



University of Sheffield

Virtual

Schools Hub.



Presentations and workshops

We have created a range of presentations and workshops that we can deliver in your school or college.

[Presentations and workshops →](#)



Transition to University

Are your students considering applying for University and looking for information and guidance? Here you will find useful information to help guide your students through this process.

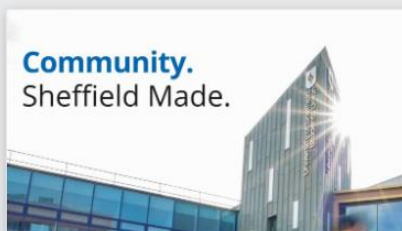
[Find out more →](#)



Resources for teachers and advisors

Here you will find relevant resources you may find useful in your role as a teacher or advisor.

[Resources →](#)



Chat to our team

Our student ambassadors and staff are the best people to tell you about what studying at Sheffield is like. Start a conversation or search for their answers to your questions.

[Chat to our team →](#)



Information for parents

We have created a resource for parents, careers and guardians to help with the journey to Higher Education.

[Parents resources →](#)



Meet our alumni

Sheffield alumni go on to have exciting and interesting careers in a wide range of professions. Here, you can read their inspiring stories and get access to their careers advice.

[Alumni case studies →](#)



University of
Sheffield



Sustained

Programmes.



University of
Sheffield

Partnerships

Outreach.



The Brilliant Club

The Brilliant Club runs two core programmes - The Scholars Programme and Researchers in Schools which we partner on.

[Choosing the right programme →](#)



Realising Opportunities

Realising Opportunities is a unique collaboration of leading research intensive universities of which we have been partners since 2013.

[More about Realising Opportunities →](#)



The Elephant Group

The Elephant Group was formed in 2018 by a group of head teachers committed to increasing access to the top third universities for the top third students in UK state schools and colleges.

[Find out more →](#)



HEPP

HEPP is an initiative jointly funded by the University of Sheffield and Sheffield Hallam University which provides impartial information and advice on Higher Education and higher level skills.

[Encouraging progression →](#)



HeppSY

HeppSY is part of a national programme funded by the Office for Students (OfS) to support young people most at risk of missing out on Higher Education.

[Progressing to higher education →](#)



Access Sheffield

You may be eligible for additional support if:

- You live in an area with a low rate of participation in higher education
- You're a care leaver
- You're care experienced
- You're estranged from family
- You're a carer
- You're a forced migrant
- You have parenting responsibilities
- You're entitled to free school meals

To check eligibility criteria visit: <https://www.sheffield.ac.uk/access-sheffield/eligibility>



University of
Sheffield

- As an **Access+** student, you'll be eligible for wrap-around support:
 - Financial support, funded Open Days, IT & Equipment Bursaries, Sheffield Bursary
 - A dedicated team on hand to answer your questions about university
 - Help with study skills and revision
 - A reduced grade offer equivalent to one grade below the standard A Level entry requirements e.g. if the formal entry requirements for your course are ABB and you meet the criteria, you'll receive an alternative offer of BBB.
- Full support details: <https://www.sheffield.ac.uk/access-sheffield>



Eligibility

requirements.



University of
Sheffield

Academic criteria

A Level (or equivalent) requirements:

Should be studying a minimum of 3 A Levels including any specified subjects according to the pathway applied for.

GCSE requirements:

Min. 5 A*-B (or 9-6), plus a minimum of C (4) in English, if not already included. Plus any specified grades/subjects according to the pathway applied for.



Widening Access Criteria (*in addition to academic criteria per pathway*)

Meet at least one of the following:

- Live in an area of Low Participation in Higher Education (measured by POLAR4 data)
- Live in an area of high deprivation signalled by IMD Q1 & Q2
- Looked After Child / Young Adult Carers
- Have a declared a disability
- In receipt of free school meals
- Is experiencing estrangement



Other criteria considered where capacity permits/considered in combination with above criteria:

- Students from ethnic/gender/socio-economic groups which are currently under-represented within HE

Each application will be considered on a case-by-case basis. Any exceptional circumstances stated by the student and/or the school, such as family upheaval or disrupted schooling, will provide additional context to applications.



University of
Sheffield

External partner programmes:

- [Realising Opportunities](#)
- [The Elephant Group](#)
- [The Brilliant Club](#)



University of
Sheffield



Get

involved.



University of
Sheffield



Meet the team members for your area of the country



Sheffield Live

Insight into career opportunities, study skills and support. Our team will be on hand.

Taster Sessions

Experience what it's like to study your chosen subject at The University of Sheffield

Chat to current students

Start a conversation with our student ambassadors and staff



University of
Sheffield



@sheffielduni



The University of
Sheffield



@theuniversityof
sheffield

Connect

with us.

Be the first to know about activities at the university as well as support that we can provide to you and your students:

[Sign up to our Schools Newsletter](#)

[Follow us on Twitter](#)

schoolsliaison@sheffield.ac.uk



University of
Sheffield

Be Sheffield

Made.

Questions?

enquiries@advancingaccess.ac.uk



@AdvancingAccess



24 leading universities
working together with
schools and colleges

University of Birmingham / University of Bristol / University of Cambridge / Cardiff University

Durham University / University of Edinburgh / University of Exeter / University of Glasgow / Imperial College London

King's College London / University of Leeds / University of Liverpool

London School of Economics and Political Science / University of Manchester / Newcastle University

University of Nottingham / University of Oxford / Queen Mary University of London / Queen's University Belfast

Coming up...

- Supporting students to choose a university and course – Monday 6th March
- How to reassure your students during the cost of living crisis – Tuesday 14th March
- Helping students to apply for degree apprenticeships – Thursday 16th March
- Helping your students to navigate the student finance process in England – Tuesday 25th April
- Creating a culture of success in your school or college – Tuesday 2nd May

